

CHAMBERLAIN™

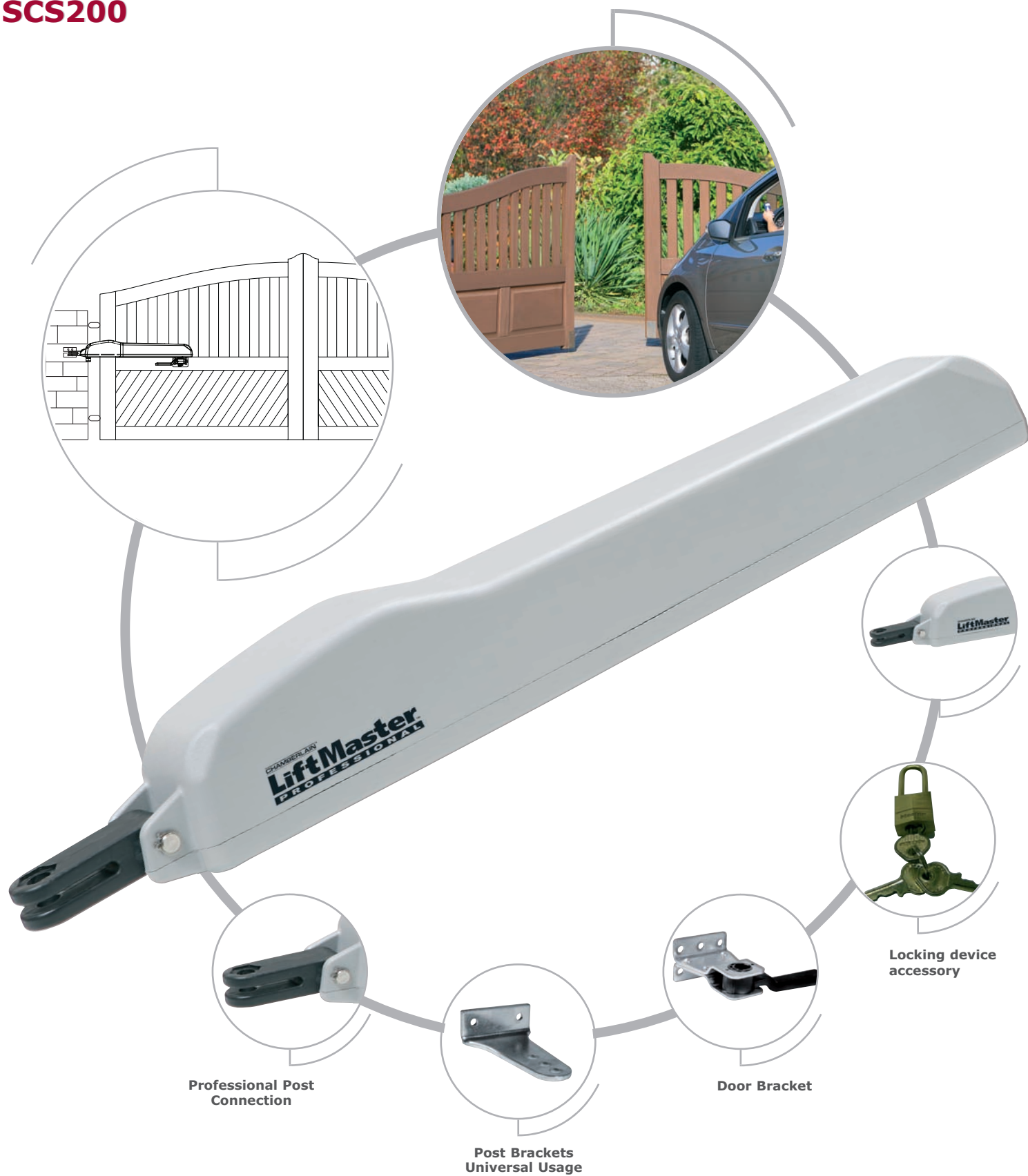
# LiftMaster™ PROFESSIONAL

## Gate Operator Product Catalog



# Wing gate operator

## SCS200

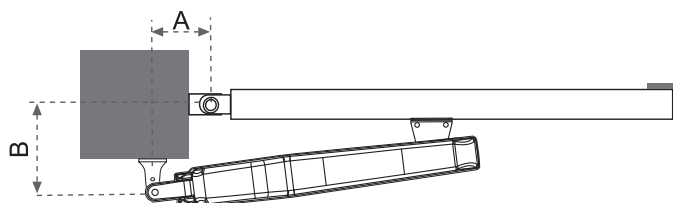
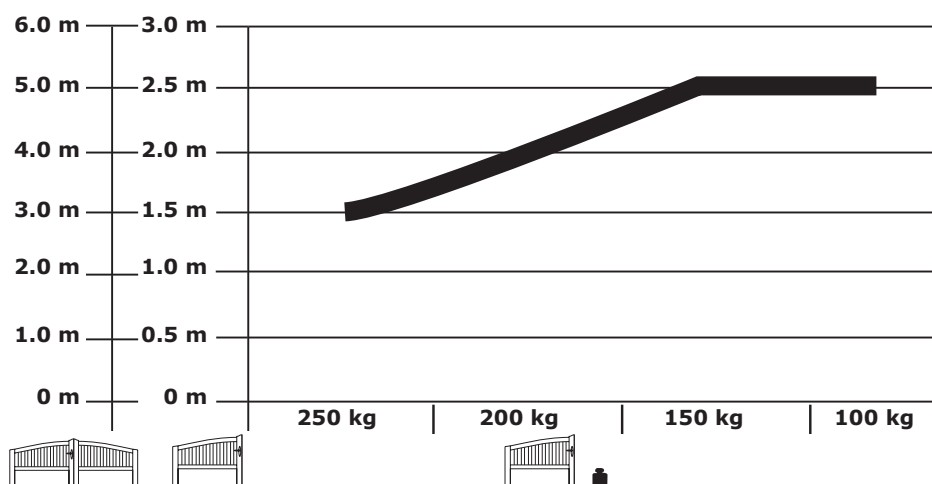


Install all equipment in  
compliance with EN60335-2-103



**2-year warranty**

# SCS200



For an opening angle of 90° - 105°

Measure A: 12-13 cm

Measure B: 13-14 cm



**55124VO Locking device**



**FLA230-2 Flashing light kit**

*For more accessories please refer to accessory catalog*

## Technical Data

		SCS200
Voltage IN	VAC	220-240
Frequency	Hz	50
Motor voltage	VDC	24
Power (nom)	W	40
Current (max)	A	1,3
Thrust (max)	daN	300
Capacitor	µF	not required
Thermal overload protection	°C	not required
Motor speed	rpm	2800
Opening time 90 degree	sec	~25
Duty cycle	cycles/hr	~5-10
Working temperature range	°C	-20°C/+55°C
Protection class		I
Degree of protection	IP	IP 44
Product weight (~)	kg	5
Max. gate wing length	m	2.5
Max gate weight at max. wing length incl. 20% reserve	kg	150

## Model & carton content chart

Model	Drive unit	Install brackets	Electronic distance limits	Electronic control	Battery backup	Remote control 94335E	IR sensor	Flashing light	Key switch	Antenna kit	Number of cartons
SCS200K	2x	•	•	•	•	1x	•	*	*	*	1

\* Optional



# Wing gate operator

## LYN Series



Professional Post Connection

Post Brackets  
Universal Usage

Heavy-Duty  
Door Bracket

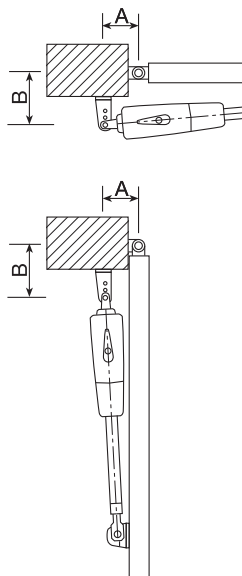
Manual Release  
with Key Lock

Install all equipment in  
compliance with EN60335-2-103

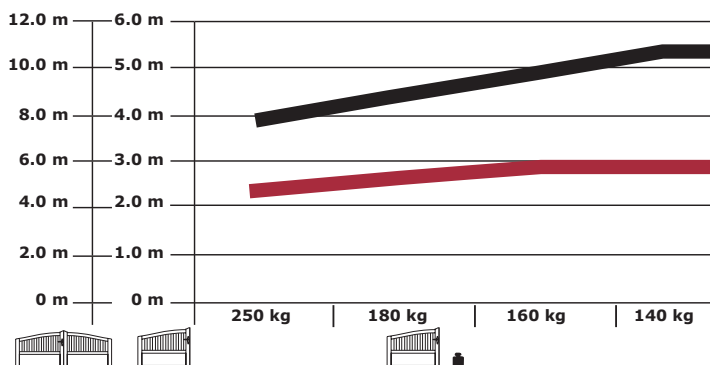


**2-year warranty**

# LYN series



## LYN300 LYN400



### LYN300

A=15cm B=15cm ≈90°		A						
		10cm	12cm	14cm	16cm	18cm	20cm	22cm
B	10cm		115°	112°	110°	105°		
	12cm		110°	105°	101°	90°		
	14cm		108°	95°	90°	85°		
	16cm		106°	90°	85°			
	18cm							
	20cm							
	22cm							

### LYN400

A=19cm B=19cm ≈90°		A						
		14cm	16cm	18cm	20cm	22cm	24cm	26cm
B	14cm	105°	120°	125°	111°	105°	99°	95°
	16cm	103°	118°	113°	102°	98°	94°	90°
	18cm	111°	115°	105°	97°	93°	90°	
	20cm	109°	103°	95°	90°	85°		
	22cm	106°	95°	90°				
	24cm	95°						
	26cm							



**771E**  
Infrared  
Safety Sensor



**FLA230-2**  
Flashing light kit

For more accessories please refer  
to accessory catalog

### Technical Data

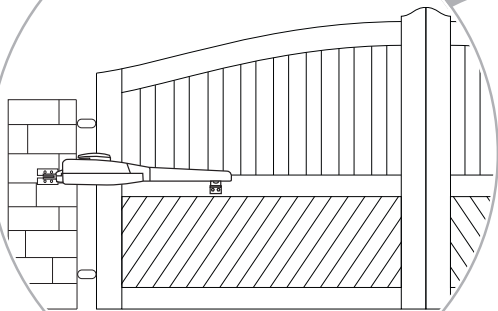
		LYN300	LYN300-24	LYN400	LYN400-24	LYN300-120	LYN400-120
Voltage IN	VAC	220-240	220-240	220-240	220-240	127	127
Frequency	Hz	50	50	50	50	60	60
Motor voltage	V	230AC	24VDC	230VAC	24VDC	127VAC	127VAC
Power (nom)	W	280	48	280	48	280	280
Current (max)	A	1.2	2	1.2	2	2.4	2.4
Thrust (rated)	N	250	250	250	250	250	250
Capacitor	μF	6.3	not required	6.3	not required	25	25
Thermal overload protection	°C	140°	not required	140°	not required	140°	140°
Motor speed	rpm	1400	2400	1400	2400	1400	1400
Travel speed (arm)	mm/s	20	25	12	20	20	12
Travel	mm	300	300	400	400	300	400
Duty cycle	cycles/hr	~20	~60	~20	~50	~20	~20
Working temperature range	°C	-20°C/+55°C	-20°C/+55°C	-20°C/+55°C	-20°C/+55°C	-20°C/+55°C	-20°C/+55°C
Protection class		I	I	I	I	I	I
Degree of protection	IP	IP 44	IP 44	IP 44	IP 44	IP 44	IP 44
Product weight (~)	kg	7	7	7	7	7	7
Max. gate wing length	m	2.5	2.5	4.0	4.0	2.5	4.0
Max gate weight at max. wing length incl. 20% reserve	kg	250	250	250	250	250	250

### Model & carton content chart

Model	Drive unit	Install brackets	Capacitor	Electronic control	Battery backup	Remote control 9433SE	Receiver & radio	IR sensor	Flashing light	Key switch	Antenna kit	Number of cartons
LYN300	1x	•	•									1
LYN300-24	1x	•										1
LYN300K	2x	•	•	•		2x	433MHz	•	•	•	•	1
LYN300K-24	2x	•		•	•	2x	433MHz	•	•	•	•	1
LYN400	1x	•	•									1
LYN400-24	1x	•										1
LYN400K	2x	•	•	•		2x	433MHz	•	•	•	•	1
LYN400K-24	2x	•		•	•	2x	433MHz	•	•	•	•	1
LYN300K-120	2x	•	•	•		2x	390MHz	•	•	•	•	1
LYN400K-120	2x	•	•	•	•	2x	390MHz	•	•	•	•	1

# Wing gate operator

## SCS300



Manual Release  
with Key Lock



8 mm steel  
Heavy-Duty  
Door Bracket



Post Brackets  
Universal Usage



Professional Post  
Connection

Install all equipment in  
compliance with EN60335-2-103



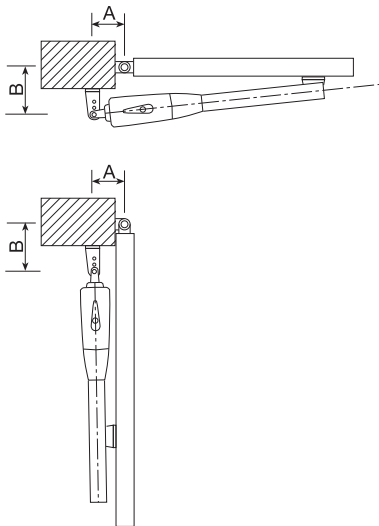
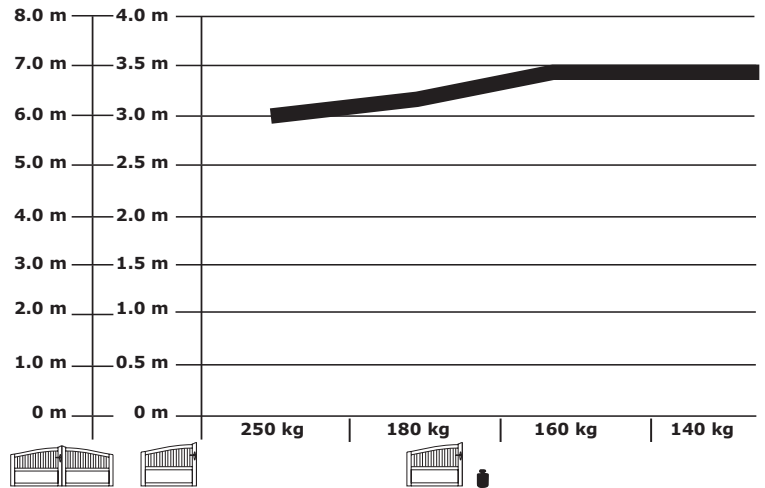
2-year warranty

# SCS300

## SCS300

### SCS300

A=15cm B=15cm		A						
		10cm	12cm	14cm	16cm	18cm	20cm	22cm
B	10cm		115°	112°	110°	105°		
	12cm		110°	105°	101°	90°		
	14cm		108°	95°	90°	85°		
	16cm		106°	90°	85°			
	18cm							
	20cm							
	22cm							



**771E**  
**Infrared**  
**Safety Sensor**



**FLA230-2**  
**Flashing light kit**

For more accessories please refer to accessory catalog

### Technical Data

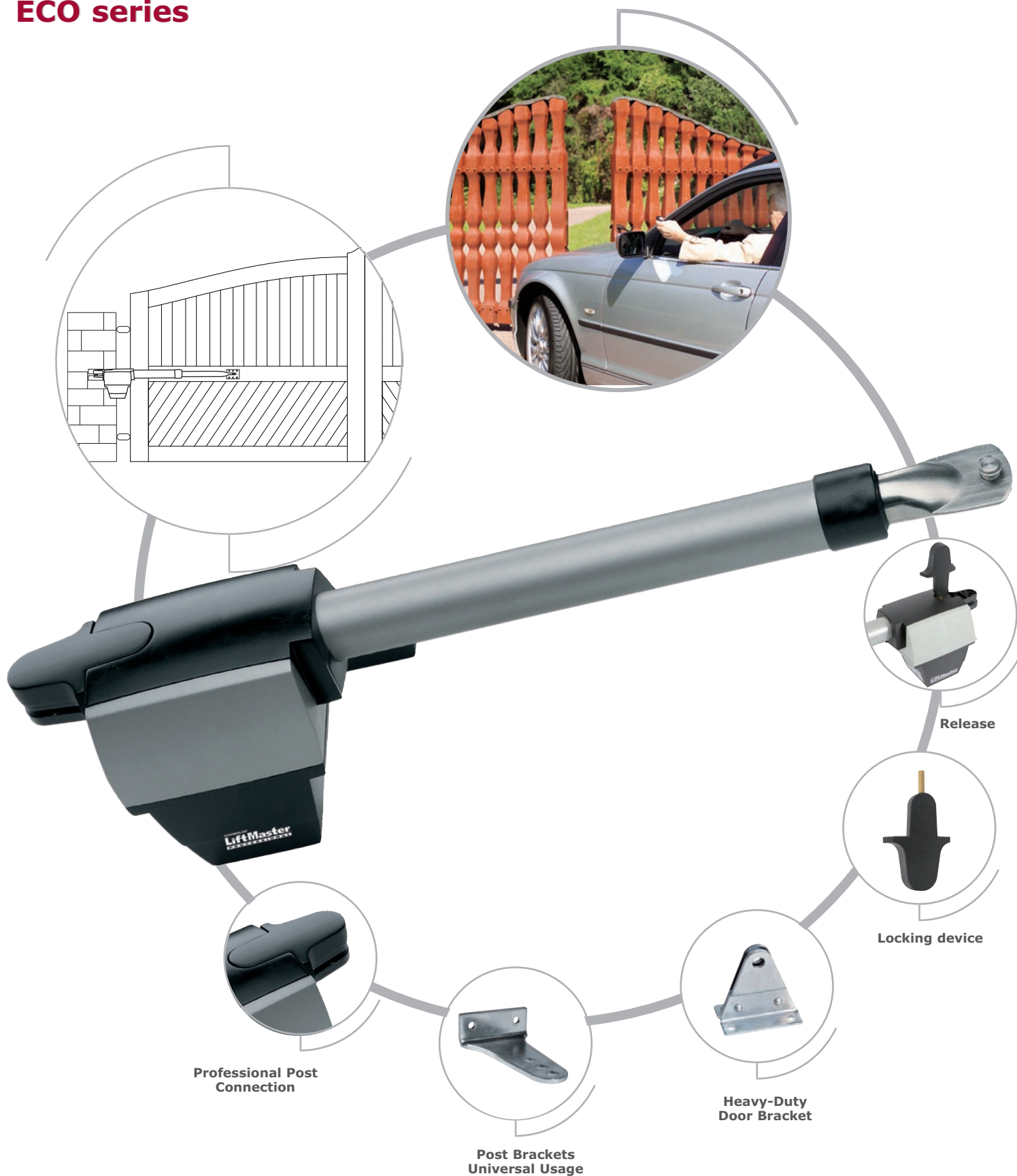
		SCS300	SCS300-24	SCS300-120
Voltage IN	VAC	220-240	220-240	127
Frequency	Hz	50	50	60
Motor voltage	V	230AC	24VDC	127VAC
Power (nom)	W	280	48	280
Current (max)	A	1.2	2	2.4
Thurst (rated)	N	250	250	250
Capacitor	μF	6.3	not required	25
Thermal overload protection	°C	140°	not required	140°
Motor speed	rpm	1400	2400	1400
Travel speed (arm)	mm/s	~20	~25	~20
Travel	mm	300	300	300
Duty cycle	cycles/hr	~20	~70	~20
Working temperature range	°C	-20°C/+55°C	-20°C/+55°C	-20°C/+55°C
Protection class		I	I	I
Degree of protection	IP	IP 44	IP 44	IP 44
Product weight (~)	kg	6.5	6.5	6.5
Max. gate wing length	m	3.0	3.0	3.0
Max gate weight at max. wing length incl. 20% reserve	kg	250	250	250

### Model & carton content chart

Model	Drive unit	Install brackets	Hard Stops	Capacitor	Electronic control	Battery backup	Remote control 94335E	Receiver & radio	IR sensor	Flashing light	Key switch	Antenna kit	Number of cartons
SCS300	1x	•	•	•									1
SCS300-24	1x	•											1
SCS300K	2x	•	•	•	•		2x	433MHz	•	•	•	•	1
SCS300K-24	2x	•			•	•	2x	433MHz	•	•	•	•	1
SCS300K-120	2x	•	•	•	•		2x	433MHz	•	•	•	•	1

# Wing gate operator

## ECO series



Professional Post Connection

Post Brackets Universal Usage

Heavy-Duty Door Bracket

Locking device

Release

Install all equipment in compliance with EN60335-2-103



2-year warranty



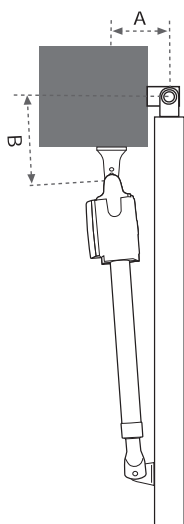
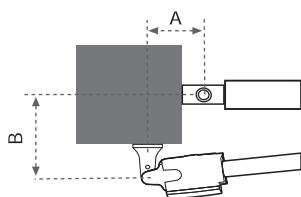
# ECO series

## ECO300

A=15cm B=15cm		A						
		10cm	12cm	14cm	16cm	18cm	20cm	22cm
B	10cm		115°	112°	110°	105°		
	12cm		110°	105°	101°	90°		
	14cm		108°	95°	90°	85°		
	16cm		106°	90°	85°			
	18cm							
	20cm							
	22cm							

## ECO400

A=19cm B=19cm		A						
		14cm	16cm	18cm	20cm	22cm	24cm	26cm
B	14cm	105°	120°	125°	111°	105°	99°	95°
	16cm	103°	118°	113°	102°	98°	94°	90°
	18cm	111°	115°	105°	97°	93°	90°	
	20cm	109°	103°	95°	90°	85°		
	22cm	106°	95°	90°				
	24cm	95°						
	26cm							



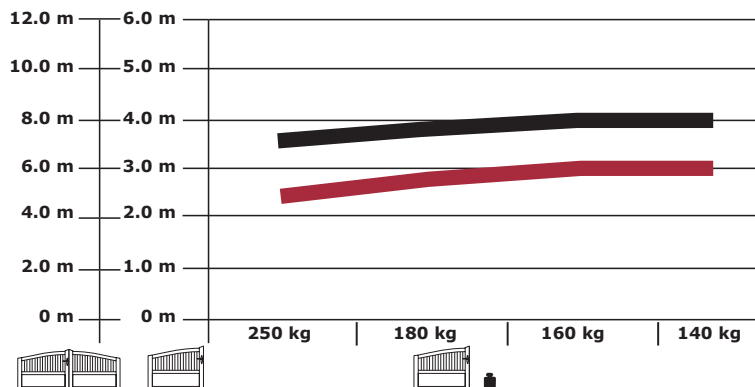
**771E**  
**Infrared**  
**Safety Sensor**



**FLA230-2**  
**Flashing light kit**

For more accessories please refer  
to accessory catalog

## ECO300 ECO400



## Technical Data

		ECO300	ECO400
Voltage IN	VAC	220-240	220-240
Frequency	Hz	50	50
Motor voltage	VAC	230	230
Power (nom)	W	220	220
Current (max)	A	1.3	1.3
Thrust (rated)	N	250	250
Capacitor	μF	5	5
Thermal overload protection	°C	140°	140°
Motor speed	rpm	1400	1400
Travel speed (arm)	mm/s	~20	~12
Travel	mm	300	400
Duty cycle	cycles/hr	16	8
Working temperature range	°C	-20°C/+55°C	-20°C/+55°C
Protection class		I	I
Degree of protection	IP	IP 44	IP 44
Product weight (~)	kg	4.5	5
Max. gate wing length	m	2.5	3.5
Max gate weight at max. wing length incl. 20% reserve	kg	250	250

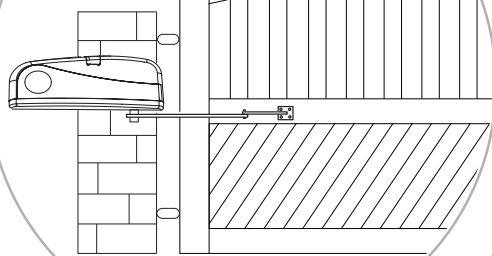
## Model & carton content chart

Model	Drive unit	Install brackets	Capacitor	Electronic control	Battery backup	Remote control 94335E	Receiver & radio	IR sensor	Flashing light	Key switch	Antenna kit	Number of cartons
ECO300K	2x	•	•	•		2x	433MHz	•	*	*	*	1
ECO400K	2x	•	•	•		2x	433MHz	•	*	*	*	1

\* Optional

# Wing gate operator

## ART200



Release



Manual Release with Key Lock



Arm



Base plate standard



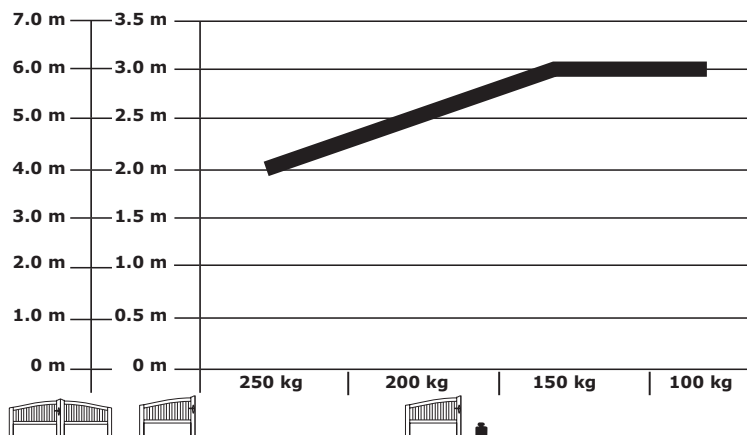
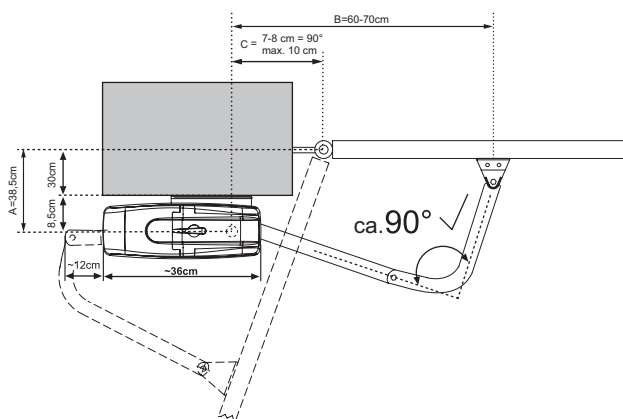
Limit switch

Install all equipment in compliance with EN60335-2-103



2-year warranty

# ART200



**ART-2 2m gate arm**



**ART-4 External release lock for gates**



**ART-5 Internal release lock for gates**



**ART-6 Base plate narrow fit**



**ART-7 Base plate standard included**

For more accessories please refer to accessory catalog

## Technical Data

		ART200
Voltage IN	VAC	220-240
Frequency	Hz	50
Motor voltage	VDC	24
Power (nom)	W	40
Current (max)	A	1.3
Torque (max)	Nm	200
Capacitor	μF	not required
Thermal overload protection	°C	not required
Motor speed	rpm	2800
Opening time 90 degree	sec	~25
Duty cycle	cycles/hr	~20
Working temperature range	°C	-20°C/+55°C
Protection class		I
Degree of protection	IP	IP 44
Product weight (~)	kg	5
Max. gate wing length	m	2.5
Max gate weight at max. wing length incl. 20% reserve	kg	150

## Model & carton content chart

Model	Drive unit w. cover	Electronic distance limits	Trans former	Electronic control	Mounting plate	Drive arm	Remote control 94335E	Receiver & radio	IR sensor	Flashing light	Key switch	Antenna kit	Number of cartons
ART200K	2x	•	•	•	•*	•**	1x	433MHz	•	***	***	***	1

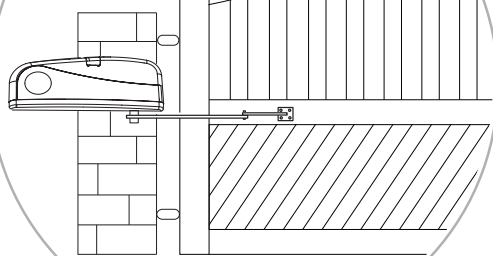
\* ART-7 Standard wide fit post bracket

\*\* ART-3AL Aluminium design door arm

\*\*\*Optional accessory

# Wing gate operator

## ART300



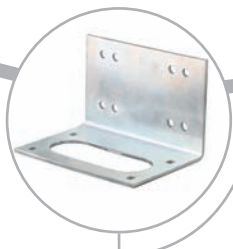
Release



Manual Release with Key Lock



Arm



Base plate standard



Limit switch

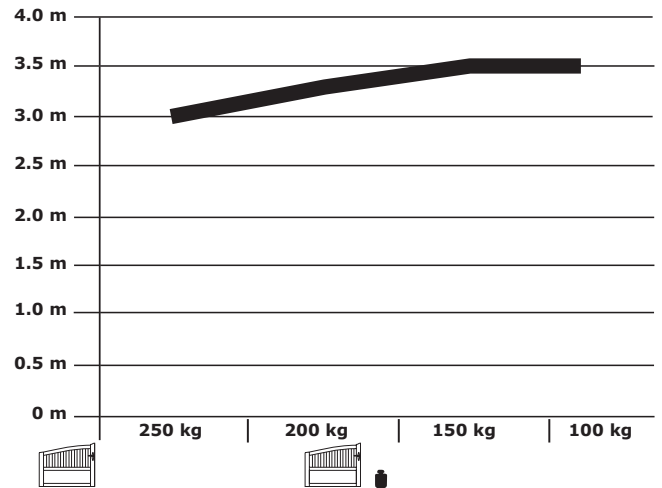
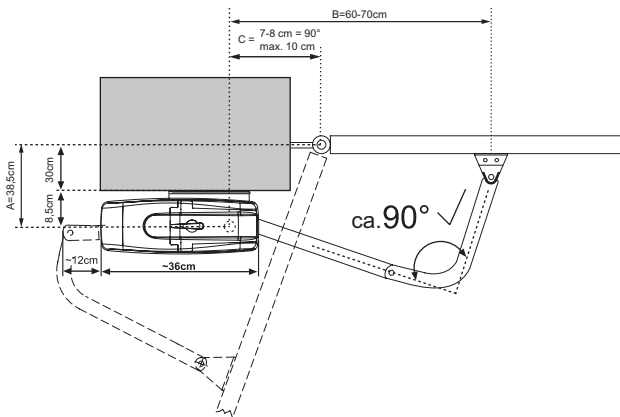
Install all equipment in compliance with EN60335-2-103



2-year warranty



# ART300



**ART-1** Folding door arm



**ART-2** 2m gate arm



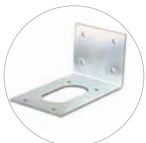
**ART-3** 3m gate arm



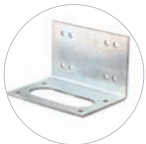
**ART-4** External release lock for gates



**ART-5** Internal release lock for gates



**ART-6** Base plate narrow fit



**ART-7** Base plate standard included

## Technical Data

		<b>ART300</b>
Voltage IN	VAC	220-240
Frequency	Hz	50
Motor voltage	VAC	230
Power (max)	W	400
Current (max)	A	1,8
Torque (max)	Nm	350
Capacitor	microF	10
Thermal overload protection	°C	140
Motor Speed	RPM	1400
Opening Time 90 degree	sec	~14
Duty Cycle	cycles/hr	~20
Working Temperature Range	°C	-20°C/+55°C
Protection Class		I
Degree of protection	IP	IP 44
Product weight (~)	kg	6
Max. gate wing length	m	3
Max gate weight at max. wing length incl. 20% reserve	kg	250

For more accessories please refer to accessory catalog

## Model & carton content chart

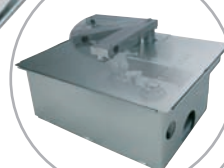
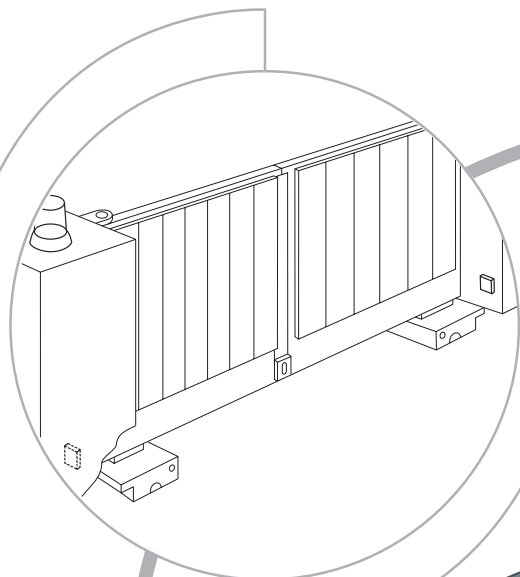
Model	Drive unit w. cover	Capacitor	Limit switch	Electronic control	Mounting plate standard	Drive arm	Remote control 94335E	Receiver & radio	IR sensor	Flashing light	Key switch	Antenna kit	Number of cartons
ART300	1x	•	•										1
ART300K	2x	•	•	•	•*	•**	2x	433MHz	•	•	•	•	1

\* ART-7 Standard wide fit post bracket

\*\* ART-3AL Aluminium design door arm

# Underground gate operator

## SUB300



Release



Manual Release



110° Arm



Box



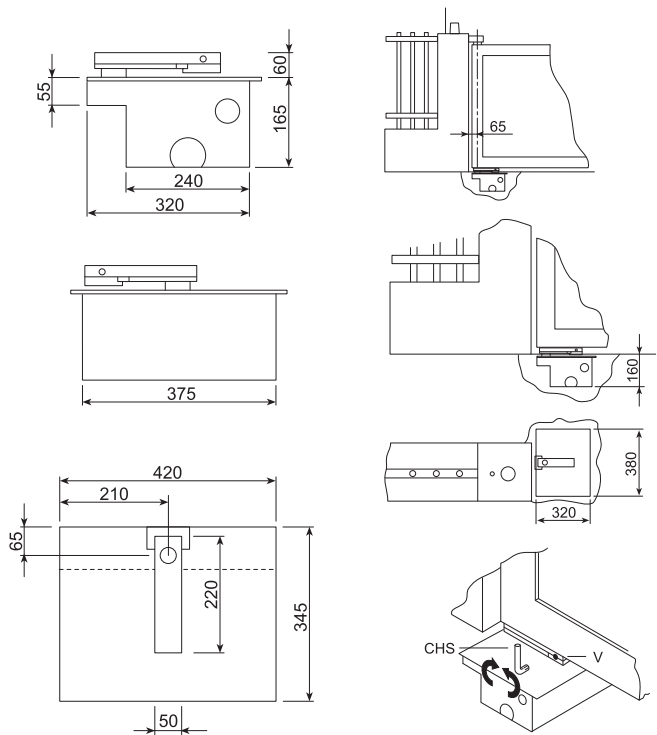
Motor

Install all equipment in  
compliance with EN60335-2-103



**2-year warranty**

# SUB300



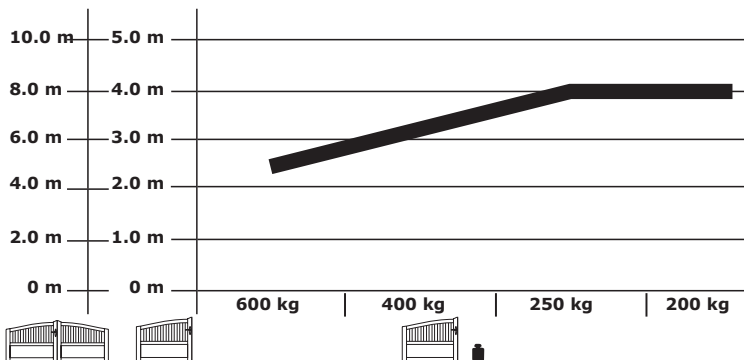
**SUB100S – Retrofit adapter arm**



**SUB-180 – 180° Arm**



**SUB-110 – 110° Arm**



## Technical Data

		SUB300	SUB300-24
Voltage IN	VAC	220-240	220-240
Frequency	Hz	50	50
Motor voltage	V	230VAC	24VDC
Power (nom)	W	300	80
Current	A	2.1	3.52
Torque (max)	Nm	380	380
Capacitor	µF	10	not required
Thermal overload protection	°C	150°	not required
Motor speed	rpm	1400	1400
Duty cycle	cycles/hr	~20	~40
Working temperature range	°C	-25°C/+55°C	-25°C/+55°C
Protection class		I	I
Degree of protection	IP	IP67	IP67
Motor weight (~)	kg	10	10
Max. gate wing length	m	4.0	4.0
Max gate weight at max. wing length incl. 20% reserve	kg	600kg at 2.5m	600kg at 2.5m

For more accessories please refer to accessory catalog

## Model & carton content chart

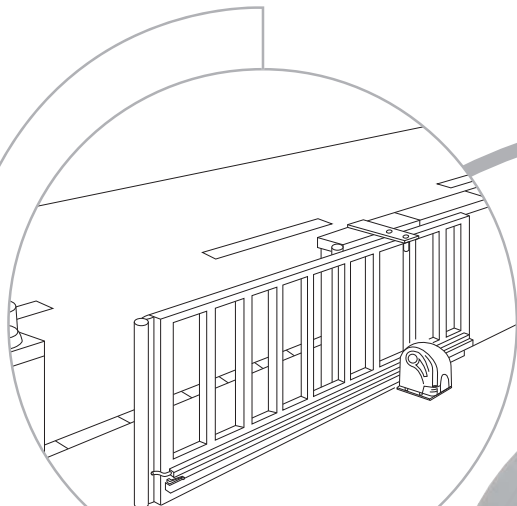
Model	Drive unit	Capacitor	Electronic control	Remote control 94335E	Receiver & radio	Foundation box	Drive arm	IR sensor	Flashing light	Key switch	Antenna kit	Number of cartons
SUB300M	1x	•										1
SUB300M-24	1x											1
SUB300K	2x	•	•	2x	433MHz	•*	•**	•	•	•	•	9

\* SUB300B Zinc coated box included

\*\* SUB-110 110° opening arm included

# Sliding gate operator

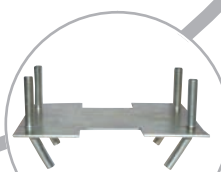
## SLY series



SLY250



Manual Release  
with Key Lock



Mounting plate



Steel rack



Magnetic limit  
switches

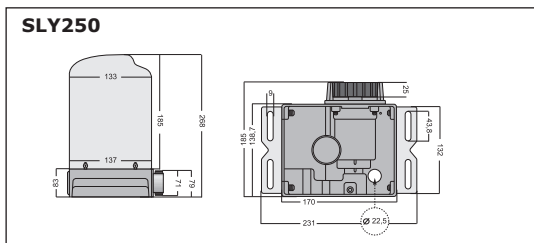
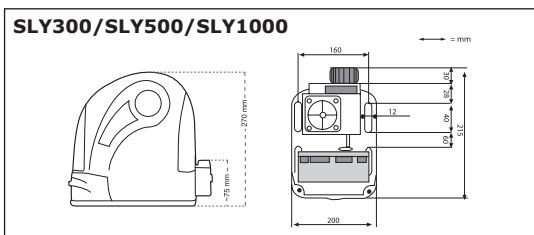
Install all equipment in  
compliance with EN60335-2-103



**2-year warranty**



## SLY series



**202097 Rack, steel • 4 x 1m Kit**



**202127 Rack, plastic • 1m**

**202134 Rack, plastic • 8 x 0,5m**

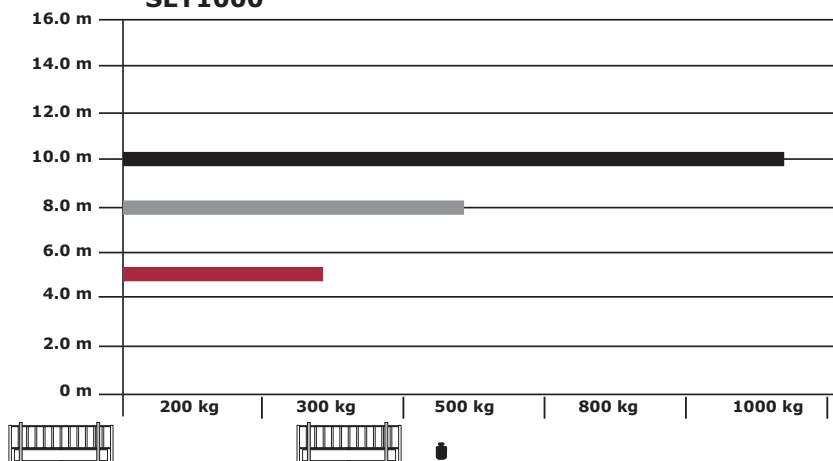


## 203261 RPM sensor



**For more accessories  
please refer to  
accessory catalog**

**SLY300**  
**SLY500**  
**SLY1000**



## Technical Data

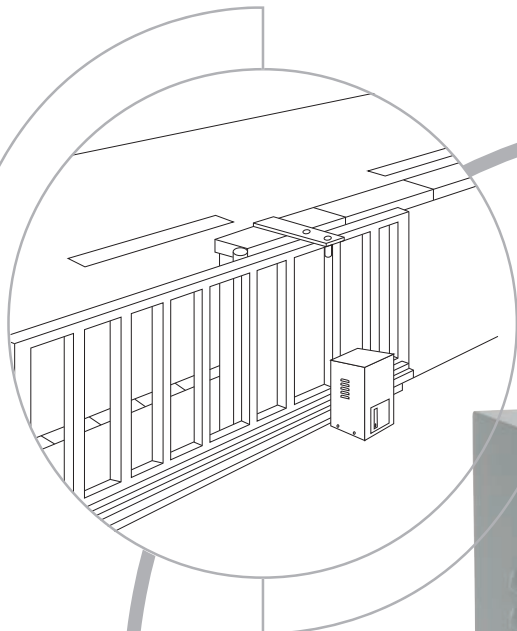
		SLY250	SLY300	SLY300-24	SLY500	SLY500-24	SLY500-120	SLY1000
Voltage in	VAC	220-240	220-240	220-240	220-240	220-240	127	220-240
Frequency in	Hz	50	50	50	50	50	60	50
Motor voltage	V	230VAC	230VAC	24VDC	230VAC	24VDC	127VAC	230VAC
Power	W	130	300	40	360	60	360	480
Current (max)	A	1	1.3	13	1.5	22	3.0	2.1
Torque	Nm	6	9	10	10	15	10	12
Capacitor	microF	8	9	-	10	-	17	12
Thermal overload protection	°C	140°C	140°C	-	140°C	-	140°C	140°C
Motor speed	RPM	1400	1400	2500	1400	2200	1625	1400
Travel speed (~)	cm/s	12	12	25	12	20	14	11,5
Duty cycle (max)	cycles/hr	~30	~30	~50	~30	~50	20	~30
Working temperature range	°C	-25°C/+55°C	-20°C/+55°C	-20°C/+55°C	-20°C/+55°C	-20°C/+55°C	-20°C/+55°C	-20°C/+55°C
Protection class		I	I	I	I	I	I	I
Degree of protection	IP	IP44	IP 44	IP 44	IP 44	IP 44	IP 44	IP 44
Product weight (~)	kg	7	8	8	8	8	8	10
Max gate wing length	m	4m	5m	5m	8m	8m	8m	10m
Max gate weight at max. wing length incl. 20% reserve	kg	250kg	300kg	300kg	500kg	500kg	500kg	1000kg

### Model & carton content chart

Model	Drive unit w. cover	Adjust. mounting plate	Capacitor	Trans former	Magnetic limit switches	Electronic control	Remote control 94335E	Receiver & radio	IR sensor	Flashing light	Key switch	External antenna	Number of cartons
SLY250	1x	●	●		●								1
SLY250E	1x	●	●		●	●							1
SLY250K	1x	●	●		●	●	2x	433MHz	●	●	●	●	2
SLY300	1x	●	●		●								1
SLY300-24	1x	●		●	●								1
SLY300E	1x	●	●		●	●							1
SLY300E-24	1x	●		●	●	●							1
SLY300K	1x	●	●		●	●	2x	433MHz	●	●	●	●	1
SLY300K-24	1x	●		●	●	●	2x	433MHz	●	●	●	●	1
SLY500	1x	●	●		●								1
SLY500-24	1x	●		●	●								1
SLY500E	1x	●	●		●	●							1
SLY500E-24	1x	●		●	●	●							1
SLY500K	1x	●	●		●	●	2x	433MHz	●	●	●	●	1
SLY500K-24	1x	●		●	●	●	2x	433MHz	●	●	●	●	1
SLY500E-120	1x	●	●		●								1
SLY500K-120	1x	●	●		●	●	2x	390MHz	✕	✕	✕	✕	1
SLY1000	1x	●	●		●								1
SLY1000E	1x	●	●		●	●							1
SLY1000K	1x	●	●		●	●	2x	433MHz	●	●	●	●	1

# Sliding gate operators

## SLY XL series



Release



Manual Release  
with Key Lock



Motor



Steel rack  
accessory



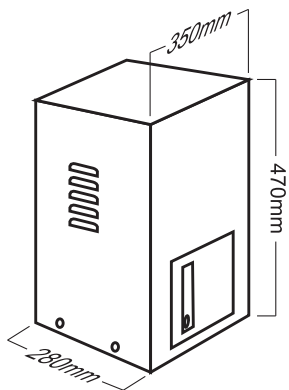
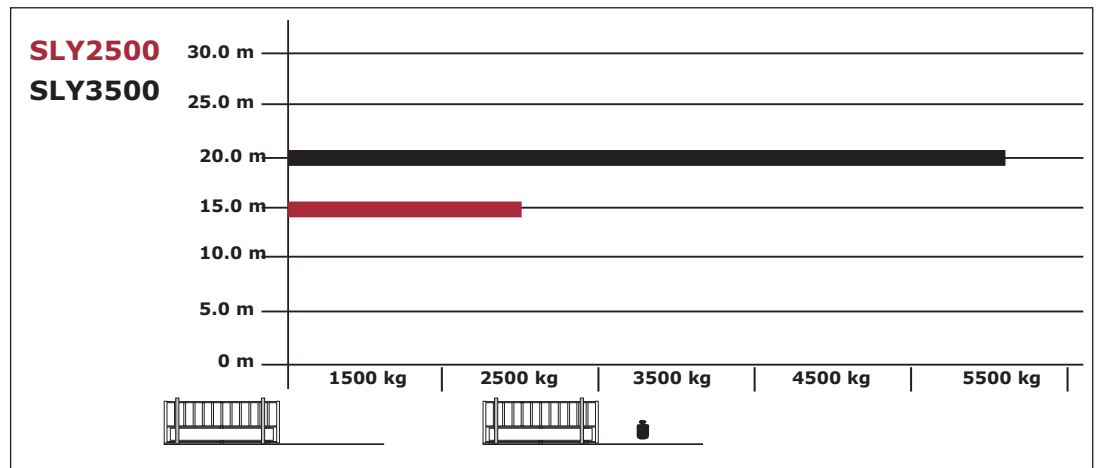
Limit switch

Install all equipment in  
compliance with EN60335-2-103



**2-year warranty**

## SLY XL series



320001 Rack, steel • 1m  
202097 Rack, steel • 4 x 1m Kit



For more accessories please refer to accessory catalog

### Technical Data

		SLY2500	SLY3500
Voltage in	VAC	220-240	400
Frequency in	Hz	50	50
Motor voltage	VAC	230	400
Phase		1-P	3-P
Power	W	500	750
Current (nom.)	A	4,9	1,97
Torque	Nm	120	215
Capacitor	microF	2x 16yF	-
Thermal overload protection	°C	140°	switch
Motor speed	RPM	1500	1500
Travel speed (~)	m/min	10	10
Duty cycle (max.)	%/hr	~25	~60
Working temperature range	°C	-25°C/+55°C	-25°C/+55°C
Protection class		I	I
Degree of protection	IP	IP 55	IP 55
Product weight (~)	kg	35	35
Max gate wing length (~)	m	15	20
Max gate weight at max. wing length incl. 20% reserve	kg	2500	5500

### Model & carton content chart

Model	Drive unit w. cover	Release mechanism	Capacitor	2x limit switches	Electronic hold-to-run	Electronic automatic	Receiver & radio	IR sensor	Flashing light	Key switch	Push button	Number of cartons
SLY2500	1x	•	•	•						*	*	1
SLY2500E2	1x	•	•	•		•	*	*	*	*	*	2
SLY3500	1x	•		•								1
SLY3500E1	1x	•		•	•					*	*	2
SLY3500E2	1x	•		•		•	*	*	*	*	*	2

\* Optional

Install all equipment in compliance with EN60335-2-103



2-year warranty